

The 8th Asian NIR Symposium

Research and
Technologies
for
NIR Spectroscopy



The 8th Asian NIR Symposium 2022

November 28 – 30, 2022

Seoul, South Korea

<http://www.ans2022.org>



DI NOZZE Convention

17, Wangsimni-gwangjang-ro, Seongdong-gu, Seoul,
Republic of Korea

Wangsimni Station, inside the private station 6

Welcome Address

On behalf of the Organizing Committee, it is indeed a great honor and pleasure to invite you all to the 8th Asian NIR Symposium (ANS 2022), which will be held on November 28th to 30th, 2022, in Seoul, Republic of Korea (<http://www.ans2022.org>). ANS 2022 aims at highlighting and treating in-depth recent developments and progress in the field of Near-infrared (NIR) spectroscopy. NIR spectroscopy is a fast and versatile method that able to analyze diverse samples non-destructively without sample preparation. Research and techniques that utilize NIR spectroscopy will be topics of the conference. These topics will include, but are not limited to:

- Theory in NIR spectroscopy
- New chemometrics improving accuracy of analysis
- Recent development in NIR instrumentations including miniaturized and imaging systems
- NIR spectroscopy in clinical and biomedical diagnosis
- New NIR applications for qualitative and quantitative analysis.

The conference will cover all aspects of NIR spectroscopy ranging from the theory to applications in various fields, such as agriculture, polymer, pharmaceuticals, chemicals and on-line quality control. Not only solely NIR spectroscopy, but also any other hyphenated analytical methods with NIR spectroscopy could be included.

Your active participation in the ANS 2022 will certainly make a successful conference. Please mark your calendar - November 28th to 30th, 2022 in Seoul, Republic of Korea!

We look forward to seeing you in ANS 2022.

Thank you!

Prof. Hoeil Chung

Chair of 8th ANS 2022, Department of Chemistry, Hanyang University



Important Date

The deadline for abstract submission is on August 15, 2022

Subject	Date
Announcement of ANS2022	May 1, 2022
Call for Abstract	May 15, 2022
Close Abstract Submission	August 15, 2022
Early Bird Registration	September 22, 2022
Close Bird Registration	October 21, 2022
Open Regular Registration	October 22, 2022 /

※ Onsite registration available at conference

Program

The final program will be on the website soon

Nov. 28 (Mon)	09:00 – 13:00	Build up for symposium (booth, poster board)
	15:00 – 17:00	Registration
	17:00 – 18:00	Board meeting
Nov. 29 (Tue)	09:00 – 12:00	Opening, Keynote Lectures, Oral Contributions
	12:00 – 13:00	Break
	13:00 – 18:00	Invited Speaker, Oral and Poster Contributions
Nov. 30 (Wed)	09:00 – 12:00	Invited speaker, Oral and Poster contributions
	12:00 – 13:00	Break
	13:00 – 18:00	Invited Speaker Oral Contribution and Poster Award Closing Ceremony

Abstract Submission

The deadline for abstract submission is on August 15, 2022

Contributed Papers:

The Organizing Committee invites delegates to submit abstracts for consideration as oral or poster presentations. Oral presentations may be requested, but abstracts for oral presentations will be selected by the Program Committee. Abstracts will be reviewed and requested oral presentations will be given oral time slots if the presentations fit into the oral sessions. The oral sessions will generally be devoted to subjects or themes. If an abstract is not accepted for an oral presentation it will be designated as a poster presentation.

The organizing committee requires an electronic version of the abstract as an attachment at ans2022seoul@gmail.com no later than **August 15, 2022**. Notice of acceptance will be sent in **September 2022**. Please prepare and submit your abstract in the standard format. The standard template can be found in the conference homepage (<http://www.ans2022.org>).

Paper (Proceeding) Submission

During the period of August 15, 2022 – September 19, 2022, all of the accepted papers will be requested to upload 1-page paper (download template from <http://www.ans2022.org>) on the website directly. The committee will be notifying the paper submission to each author in due course.

Registration

Registration will start from September 19 through the conference homepage

All those wishing to participate in the Symposium must register. For details of registration, see the conference homepage (<http://www.ans2022.org>).

- A regular conference registration includes the Abstract book, Banquet, Welcoming Reception and others.
- Student registrations are for full-time students who are pursuing a degree and are currently enrolled.
- Accompanying persons are inclusive of all the same activities on 28-30 November, welcome reception and banquet BUT not inclusive of conference room attending.
- The registration desk will be open at 15:00 on Monday, November 28, 2022

Registration Fees:

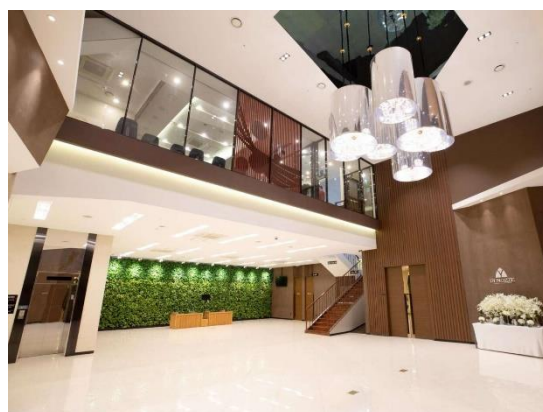
	Early Bird Registration (before April 30, 2022)	On-site Registration
Conferee	\$ 350	\$ 450
Students	\$ 250	\$ 300
Accompanying Persons	\$ 200	\$ 250

Payment:

- Payment in US \$ without any charges to the beneficiary should be made by credit card (Visa or Master Card)
- Participants are highly encouraged to pay by credit card only, bank transfer is not accepted.
- For those who cannot process the credit card, payment by cash on site in USD (or equivalent Republic of Korean Won at the time of payment) is possible, but the on-site registration will be used.

Venue

- ANS 2022 will be held at DI NOZZE Convention located in Seoul (<http://dinozze.co.kr/>).



Incheon International Airport to DI NOZZE Convention hall:

- Google map : <https://goo.gl/maps/8zTa3DkhmNt2BPL46>
- Naver map : <http://naver.me/FoW2vuaf>
- Get on at Incheon Airport Terminal 1 or 2 Stations (Airport Railroad, bound for Seoul Station), transfer at Hongik University Station (Line #2, inner line to City Hall), and finally get off at Wangsimni Station

Gimpo International Airport to DI NOZZE Convention hall:

- Google map : <https://goo.gl/maps/AnySkgGAZ3UPMum57>
- Naver map : <http://naver.me/GRft5yeE>
- Get on at Gimpo Airport Station (Airport Railroad, bound for Seoul Station), transfer at Hongik University Station (Line #2, inner line to City Hall), and finally get off at Wangsimni Station (Exit #12)

Accommodation

- ANS2022 will be held at Dinozze convention hall (Seoul), rather than a specific conference hotel, therefore a participant needs to find own accommodation by popular hotel booking sites such as Expedia and Hotels.com. Since Dinozze convention hall is conveniently located at Wangsimni Station, that is accessible by 4 different subway lines, a participant can easily commute to ANS2022 from a decided convention hall by the subways.
- Four Points by Sheraton Josun (Euljiro 3-ga Station, Subway line #2)
- L7 Gangnam by LOTTE (Seolleung Station, Suin–Bundang Line)
- Summit hotel Seoul (Dongdaemun History & Culture Park Station, Subway line #2)
- Nine tree hotel Dongdaemun (Dongdaemun History & Culture Park Station, Subway line #2 and #5)
- Novotel Ambassador Seoul Dongdaemun Hotels & Residences (Dongdaemun History & Culture Park Station, Subway line #2)
- Hotel New Seoul (Seolleung Station, Suin–Bundang Line)
- Toyoko Inn Seoul Dongdaemun No.2 (Dongdaemun History & Culture Park Station, Subway line #2)

Visas

- Temporary suspension measures have been applied to 90 countries/regions* that have a visa-waiver or visa-free entry program with the Republic of Korea, as of April 13, 2020.
* 56 Visa-waiver countries and 34 Visa-free countries/regions
- Entry restrictions have been implemented for Japan as of March 9, 2020)
- Accordingly, persons with a passport from the relevant 90 countries/regions, which are subject to the suspension measure as listed below, are required to obtain a visa from a Korean diplomatic mission to enter the Republic of Korea.
- For more information, please visit the Ministry of Foreign Affairs and Trade's website (<https://www.mofa.go.kr/eng/index.do>).

About Republic of Korea

The Republic of Korean Peninsula is located in North-East Asia. It is bordered by the Amnok River (Yalu River) to the northwest, separating Republic of Korea from China, and the Duman River (Tumen River) to the northeast which separates Republic of Korea from both China and Russia. The country itself is flanked by the Yellow Sea to its west and the East Sea to the east. There are several notable islands that surround the peninsula including Jeju, Ulleungdo and Dokdo.

The Republic of Korean peninsula is roughly 1,030 km (612 miles) long and 175 km (105 miles) wide at its narrowest point. Republic of Korea's total land area is 100,033 sq km, and it has a population of 49.8 million people (2011).

Because of its unique geographical location, Republic of Korea is a very valuable piece of land and an international hub of Asia.



Weather

The climate of Republic of Korea is characterized by four distinct seasons; spring, summer, autumn, and winter. Jeju in April is in the beginning of spring and the average temperature is 14.4 °C (57.92°F).

Weather Information (http://english.visitRepublic of Korea.or.kr/enu/AK/AK_EN_1_1_2.jsp)



Spring



Summer



Autumn



Winter

Time difference

City	Time							
Seoul, Tokyo (Korea Time)	1:00	4:00	7:00	10:00	13:00	16:00	19:00	22:00
Taipei, Manila, Hong Kong, Kuala Lumpur, Singapore	24:00	3:00	6:00	9:00	12:00	15:00	18:00	21:00
Bangkok, Jakarta	23:00	2:00	5:00	8:00	11:00	14:00	17:00	20:00
New Delhi, Calcutta	22:00	1:00	4:00	7:00	10:00	13:00	16:00	19:00
Teheran, Kuwait, Jeddah	19:00	22:00	1:00	4:00	7:00	10:00	13:00	16:00
Hamburg, Rome, Paris, Amsterdam	17:00	20:00	23:00	2:00	5:00	8:00	11:00	14:00
London, Madrid	16:00	19:00	22:00	1:00	4:00	7:00	10:00	13:00
Rio de Janeiro, Sao Paulo	13:00	16:00	19:00	22:00	1:00	4:00	7:00	11:00
New York, Montreal, Bogota, Toronto	11:00	14:00	17:00	20:00	23:00	2:00	5:00	8:00
Chicago, Houston	10:00	13:00	16:00	19:00	22:00	1:00	4:00	7:00
Vancouver, Seattle, San Francisco, Los Angeles	8:00	11:00	14:00	17:00	20:00	23:00	2:00	5:00
Sydney, Melbourne	2:00	5:00	8:00	11:00	14:00	17:00	20:00	23:00



1,000 won



5,000 won



10,000 won



50,000 won



500 won



100 won



50 won



10 won

Electricity and Voltage

The standard voltage in Republic of Korea is 220 volts. The outlet has two round holes and is the same type used in France, Germany, Austria, Greece, Turkey, and many other countries.

Helpful Numbers

- Emergency Call Center 119, Police 112
- Information Service – International Call 00794
- International Call Service 00799
- Local telephone number guide – Local area code + 114
- Tourist Complaint Center 1330 (https://english.visitkorea.or.kr/enu/TRV/TV_ENG_3_1.jsp)

Useful Website

- Republic of Korea Tourism Organization (<https://english.visitkorea.or.kr/enu/index.kto>)
- Gateway to Republic of Korea (<https://www.korea.net/>)
- Seoul Convention Bureau (<http://www.miceseoul.com>)
- Seoul Metropolitan Government (<http://english.seoul.go.kr>)
- Visit Seoul (<http://www.visitseoul.net>)
- Republic of Korea Immigration Service (https://www.immigration.go.kr/immigration_eng/index.do)
- Ministry of Foreign Affairs and Trade (<https://www.mofa.go.kr/eng/index.do>)
- Incheon International Airport (<https://www.airport.kr/ap/en/index.do>)

Sightseeing in Seoul

Gwanghwamun

Intro :

Gwanghwamun is the main and largest gate of Gyeongbokgung Palace, in Jongno-gu, Seoul, South Korea. It is located at a three-way intersection at the northern end of Sejongno. As a landmark and symbol of Seoul's long history as the capital city during the Joseon Dynasty, the gate has gone through multiple periods of destruction and disrepair. The most recent large-scale restoration work on the gate was finished and it was opened to the public on August 15, 2010. (<https://gwanghwamun.seoul.go.kr/eng/main.do>)



Address :

161 Sajik-ro, Sejongno, Jongno-gu, Seoul

Phone : +82-2-3700-3901

Subway :

Gwanghwamun Station Line #5 Exit 1,2, or 8

Dongguk University Station Exit #6

N Seoul Tower

Intro :

The Namsan Seoultower, Korea's first general radio wave tower, was built to promote the future of broadcasting and tourism industry. It combines a broadcast tower and an observatory which embodies traditional Korean design.

World's famous towers are known as iconic structures of the city and the country. Likewise, the Namsan Seoultower has become a symbol of Seoul and a popular tourist attraction for the last 40 years.

(<https://www.seoultower.co.kr/en/>).



Address :

04340 Namsan Seoultower, 105 Namsangongwon-gil, Yongsan-gu, Seoul

Phone :

+82-2-3455-9277

Subway :

Dongguk University Station Exit #6 and take bus (<https://www.seoultower.co.kr/en/visit/transfers>)

Lotte World Tower

Intro :

The Lotte World Tower is a 555.7 m (1,823 ft), 123-story skyscraper located in Sincheon-dong, Songpa District, Seoul, South Korea. It opened to the public on April 3, 2017, and is currently the tallest building in South Korea and the sixth tallest in the world. (<https://www.lwt.co.kr/en/main/main.do>)



Address :

05551, OLYMPIC-RO 300, SONGPA-GU, SEOUL

Phone :

+82-2-3213-5000

Subway :

Line 2 (Exit #2 of Jamshil Station) and Line 8 (Exit #11 of Jamshil Station)

National Museum of Korea

Intro :

The National Museum of Korea is the flagship museum of Korean history and art in South Korea and is the cultural organization that represents Korea. Since its establishment in 1945, the museum has been committed to various studies and research activities in the fields of archaeology, history, and art, continuously developing a variety of exhibitions and education programs (<https://www.museum.go.kr/site/eng/home>).



Address :

137 SEOBINGGO-RO, YONGSAN-GU, SEOUL, 04383, SEOUL

Phone :

+82-2-2077-9046

Subway :

Take Line #4 or the Jungang Line (Munsan-Yongmun) to Ichon Station. Go out Exit #2, and walk 150m toward Yongsan Family Park.

- More information on sightseeing in Seoul can be obtained from the following links.

1. <http://tour.Seoul.go.kr/eng/>

2. <https://www.visitseoul.net/index>